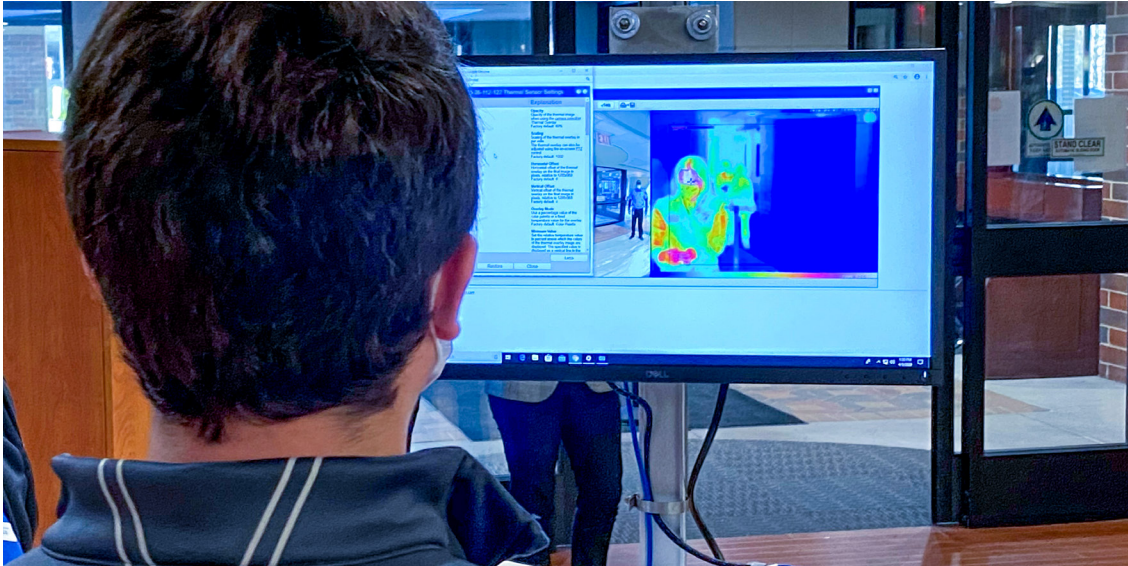
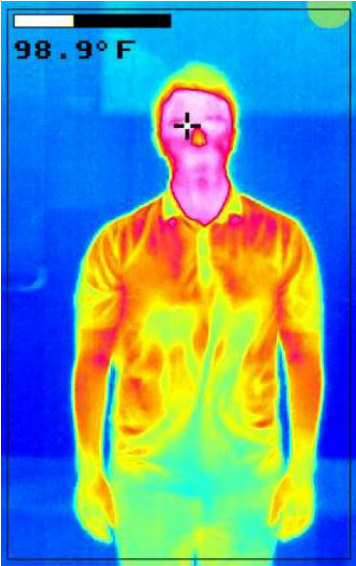


THE MOBILE EVALUATION AND TRIAGE (MET) UNIT

ADVANCED THERMAL SCANNING WHERE YOUR ORGANIZATION NEEDS IT MOST



PROTECT YOUR PEOPLE WITH ADVANCED MOBILE SCANNING TECHNOLOGY

The Mobile Evaluation and Triage (MET) unit is designed to bring high-tech thermal triage to where your organization needs it most. Perform accurate, high-capacity diagnostics wherever the need is, from an ER unit to a high-traffic building entrance, and keep your employees and customers safe.

ENGINEERED,
INSTALLED AND
INTEGRATED BY

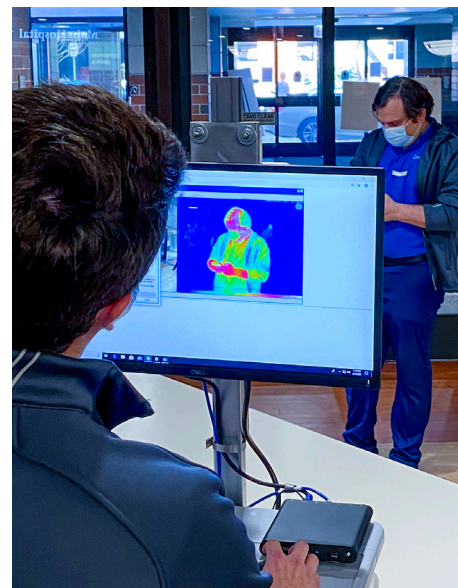




PRODUCT DETAILS

IDEAL FOR:

- HOSPITALS
- ASSISTED LIVING CENTERS
- CONVENTION CENTERS
- CASINOS
- OFFICE BUILDINGS
- ANY LOCATION WHERE MULTIPLE EMPLOYEES/CUSTOMERS ARE PRESENT
- STADIUMS



FEATURES

- M16 Thermal Camera with thermal accuracy of .4 degree Fahrenheit
- Color Camera
- Mini-PC and 24" monitor
- On-board LiFe Battery (optional)
- Completely mobile evaluation cart, easily positioned

ADVANTAGES

MOBILE

Can be positioned anywhere.

HIGH SPEED

Takes a thermal body temperature in less than one second.

INTUITIVE

Requires minimal training or healthcare experience for operators.

AUTOMATIC

Notifies you of potential health risks before individuals are aware they are at risk.

PRECISE

Thermal sensitivity accurate within one-tenth of a degree Fahrenheit

INTEGRATED

Can be directly connected with multiple sources, including security and medical staff.

See the MET in action at scientelsolutions.com/MET

ABOUT OUR COMPANY

As the premier Universal Integrator and smart infrastructure builder, Scientel Solutions is bringing unity to public and private organizations everywhere. Since 1992, we have helped our customers solve the most complex technological challenges and unlock powerful opportunities for a better, smarter world.